



## Project ECHO for Perinatal Substance Use Disorder

Project ECHO® Saginaw Valley State University is a program with a focus on **Perinatal Substance Use Disorders** including treatment, recovery, intervention, and prevention for women who are pregnant. This learning opportunity is designed for any healthcare provider, mental health or substance use disorder professional, social worker, peer recovery specialist, administrator, or student with interest in the program topics.

### What does the Perinatal Substance Use Disorders ECHO provide?

This ECHO provides training in perinatal substance use disorders at no cost, delivered right to your clinic, with a monthly schedule for your convenience. Using simple videoconferencing technology, healthcare teams connect to a community of learners which offers:

- Free continuing education credit from MyMichigan Health\*, Saginaw Valley State University\*\*, and MidState Health Network\*\*\*, Michigan Community Health Workers Alliance\*\*\*\*, State Continuing Education Clock Hours (SCECH) for Educators (pending)\*\*\*\*\*
- Opportunity to present actual patient cases, in a de-identified format, and receive specialty input
- Addiction treatment training, including management of buprenorphine/naloxone (e.g. Suboxone) and injectable naltrexone (e.g. Vivitrol)
- Access to a virtual learning community for access to treatment guidelines, tools, and patient resources

### Session information

SVSU PERINATAL SUD ECHO is held monthly on the second Wednesday of each month from 12:00 pm– 1:30 pm EST. See reverse for schedule.

### Meet the team



William Morrone,  
DO, MPH, MS,  
FAOAAM, ASAM,  
FACOPF, DABAM,  
DAAPM  
**Addictionologist**



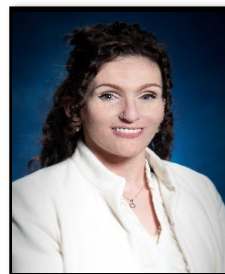
Kathleen Schachman, PhD,  
FNP-BC, PMHNP-BC, FIAAN, FAANP  
**Psychiatric Mental Health Nurse Practitioner**



Sabrina Savage,  
LMSW, CAADC,  
DP-S, CCTP,  
**Substance Use Disorder Counselor**



Susan Devuyt-Miller, Pharm.D.,  
AE-C  
**Pharmacist**



Trisha Longley,  
CPRC  
**Peer Recovery Support Expert**



Bethany Brown,  
DNP, MSN, RN,  
CNM, WHNP,  
EFM-C,  
**Psychiatric Mental Health Nurse Practitioner**



Recovery Pathways,  
LLC





**MI Babies Project**  
**CENTER FOR RURAL BEHAVIORAL**  
**HEALTH & ADDICTION STUDIES**



## Perinatal Substance Use Disorder

ECHO Session Date	Subject	Presenter
June 12, 2024	Substance Use Disorder in Pregnancy	Kathleen Schachman, PhD, FNP-BC, PMHNP-BC, PPCNP-BC, FAANP
July 10, 2024	Recovery Resources	Trisha Longley, CPRC
August 14, 2024	Trauma Informed Care in Pregnancy	Sabrina Savage, LMSW, CAADC, DP-S, CCTP
September 11, 2024	Medication for Perinatal Opioid Use Disorder- Part 1	William Morrone, DO, MPH, MS, FAOAAM, ASAM, FACOFP, DABAM, DAAPM
October 9, 2024	Medication for Perinatal Opioid Use Disorder- Part 2	William Morrone, DO, MPH, MS, FAOAAM, ASAM, FACOFP, DABAM, DAAPM
November 13, 2024	Alcohol Use During Pregnancy	Kathleen Schachman, PhD, FNP-BC, PMHNP-BC, PPCNP-BC, FAANP
December 11, 2024	Tobacco, Marijuana, and Vaping during pregnancy	Carol Essenmacher, DNP, PMHCNS-BC
January 8, 2025	Psychostimulants During Pregnancy	Dr. Robert McMorrow, MD
February 12, 2025	Neonatal Abstinence Syndrome (NAS)/ Neonatal Opioid Withdrawal Syndrome (NOWS)	Dr. Jeffery Cooper, MD-Billings Clinic
March 12, 2025	Licensure Legal Implications/Child Protective Services	Trisha Charbonneau-Ivey, BA, MSHAL
April 9, 2025	Breastfeeding & Bonding During Substance Use Treatment and Recovery	Susan DeVuyst-Miller, PharmD, AE-C
May 14, 2025	The 4 <sup>th</sup> Trimester	Susan DeVuyst-Miller, PharmD, AE-C
June 11, 2025	Perinatal Mood Disorders and Mental Health in Pregnancy	Kathleen Schachman, PhD, FNP-BC, PMHNP-BC, PPCNP-BC, FAANP

Accreditation Statement: This activity has been planned and implemented in accordance with the accreditation requirements and policies of the Accreditation Council for Continuing Medical Education (ACCME) through the joint providership of MyMichigan Health and Saginaw Valley State University. MyMichigan Health is accredited by the Michigan State Medical Society to provide continuing medical education for physicians. MyMichigan Health designates this activity for a maximum of 1.5 AMA PRA Category 1 Credit(s)™. Physicians should claim only the credit commensurate with the extent of their participation in the activity. Disclosure: Planners, faculty, and others in control of content (either individually or as a group) have no relevant financial relationships with ineligible companies. \*\*Saginaw Valley State University is an approved provider of social work continuing education. Each ECHO Session is approved for 1.5 CE. \*\*\*Each ECHO Session is approved for 1.5 substance use focused CEs by Mid-State Health Network. Continuing education units for these trainings will be accepted by MiCHWA for the re-certification of our Community Health Workers. Thank you for your continued partnership with MiCHWA and your support in providing relevant continuing education opportunities for CHWs.\*\*\*\*\* Each ECHO session is eligible for 1.5 hours of State Continuing Education Clock Hours (SCECH) credits for those holding a Michigan teaching license. (pending)



### Sign Up

989-964-2883  
[echo@svsu.edu](mailto:echo@svsu.edu)  
[svsu.edu/echo](https://svsu.edu/echo)

Easily register just once for this recurrent educational opportunity and receive regular reminders for upcoming sessions as well as valuable resources to support your practice.